

WINTER 2022

WESTHORSLEY.INFO

News and information from West Horsley Parish Council

CLIMATE CHANGE

AFFECTS YOUR
VILLAGE

HERITAGE
KNOW YOUR VILLAGE

IN THIS ISSUE



Platinum Jubilee Celebrations



Heritage of West Horsley



West Horsley Proclamation



Climate Change Special



HELLO FROM THE WHPC CHAIRMAN

Since our last edition so much has happened: from record temperatures to torrential rain, platinum jubilee celebrations to the death of our beloved Queen Elizabeth and the proclamation of King Charles III. Time seems to have flashed by and I have much to report. We welcomed two new Councillors, Paul Dodgson, and Peter Colbourne-Baber and thanks to two of our Youth Councillors, Tiana & Sapphire, who left to take up University places at Southampton & Kent. We were delighted that Arvind Parma was able to officially open our refurbished tennis court and present the winner of the tournament with a racket donated by Tim Henman. We staged the "Lighting of the Beacon" at West Horsley Place as part of the jubilee celebrations expecting about 100 people – over 800 came! Marsha, of Tiger Lily, did a sterling job of serving hot chocolate and Utterly Unique gave a wonderful rendition of songs from the past 70 years. Some people visited West Horsley Place for the very first time. In late August, I had the opportunity to thank 10 particular people who, over a number of years, have helped the Parish Council in various ways in planning, graphic design, village history, as guardians of the Orchard and judges for West Horsley in Bloom. We really appreciate the time and effort they have and continue to give; thank you all.

Meanwhile, we continued with major planning applications Lollsworth Fields, Wisley Airfield and most recently, Waterloo Farm. The strain



Cllr Elaine Best
chairman@westhorsley.info

on our infrastructure is palpable. One area is availability of school places. Our first "Question Time" style Community Forum is to address this with leaders from the statutory organisations. We'll see just what they have to say; health service provision is likely to be our second. And now we are working with local groups to identify "warm spaces" to help with the energy and cost of living crisis.

As another busy year draws to a close, on behalf of us all at WHPC, I wish you a peaceful Christmas and good times in 2023.

Cllr Elaine Best – chairman@westhorsley.info

VILLAGE REPORT 2020-2021 STATEMENT & STRATEGIC VISION

Every autumn we review our strategic vision and business plan. We have made good progress, so I am pleased to report:

- **Place making** – our Neighbourhood Plan is well-used by GBC and advice shows we only need to update sections which we will do. We have set up a Community Forum which will invite leaders from the statutory authorities to meet and discuss plans with our residents. The first on school places was held in November.
- **Community** – we are on plan to achieve "general competence" status in June 2023. We have approval for 2 more parish councillors from May 2023. The Climate Change Group has attracted a large membership and we have the expected changeover in membership of the Youth Council. Our Jubilee events and celebration of the Proclamation were well attended.
- **Innovation** – we continue to improve our website, have opened an Instagram account, and increased our postings on Nextdoor.
- **Well-being** – our programme of community events continues, and we will be planning a celebration of the King's coronation next year. Our Your Fund Surrey bids are making

steady progress. The restoration project for the Village orchard is nearing completion and planting of 7 trees at Nightingale Crescent is due in November.

This activity goes alongside our daily working as a statutory consultee on all planning applications and dealing with enquiries arising from the housing developments underway, roads, pavements, and litter.

Cllr Elaine Best – chairman@westhorsley.info



Welcome to our special Winter Edition 2022, after an eventful summer and Autumn of 2022, we hope you enjoy reading this action-packed issue and we hope it leads us all into a more positive end to the year and Festive Season!
THE EDITOR

CONTACT DETAILS & CREDITS

Parish Clerk and Responsible Financial Officer:

Julia McClung, Clerk, West Horsley Parish Council, 99 The Street, West Horsley, KT24 6DD
01483 901905, clerk@westhorsley.info

Editor: Vanessa Buosi, clrbuosi@westhorsley.info

Design and artwork by: The Creative Workshop
01580 212551, www.tcws.co.uk

Print by: Simply Print Partners, 07768 228079,
www.simplyprintpartners.com

Photographic Editor: Cllr Vanessa Buosi

The views or opinions expressed do not necessarily reflect those held by WHPC.

Front Cover: Taken by Editor



NEW BENCH

A new bench has been installed at the corner of East Lane and Ockham Road North. The bench was kindly donated by the Horsley Countryside Preservation Society in memory of Charles Mills, a long-term committee member and Chairman of the Society who sadly passed away in 2019, having lived in West Horsley for over 40 years. The HCPS commented that 'Charles selflessly volunteered his time and energy over 3 decades for the wellbeing of our community and will be sorely missed.' West Horsley Parish Council paid for the installation of the bench and the improvement to the area, including the provision of 2 new planters. Pictured are Sue Mills and Roy Proctor of the Horsley Countryside Preservation Society and Councillor Mel Beynon of West Horsley Parish Council. We hope residents will enjoy resting on the bench and will remember Charles.

Tony Rogers – cllrrogers@westhorsley.info

COST OF LIVING CRISIS & LOCAL SUPPORT

With the cost-of-living concerns affecting everyone and the worry of financial burden we urge those that need support to get in touch with the relevant groups below. We would like to hope that no one in West Horsley has to make dangerous choices regarding heating or eating or feel isolated in such a community spirited Village. The Parish Council are here to support too. clerk@westhorsley.info or Tel 01483 901905.

FINANCIAL SUPPORT

West Horsley Henry Smith Charity

Please remember that our historic Village Parish Charity can give small grants to residents in need. Please make a request, in confidence, via the clerk@westhorsley.info or Tel 01483 901905.



Parish Council Grants

Every year, the Parish Council gives grants to organisations who provide services within West Horsley. If your organisation would like to be considered, please contact the Clerk for an application form clerk@westhorsley.info. Submissions to be sent back by the end of May 2023 for 2023/24 grants.

KEEPING WARM SUPPORT

"Warm Hubs" are places where you can drop in, get warm and meet others. There is also free energy advice available too. Here is a list of a few places you could go locally: Cobham Centre Oakdene Road KT11 2LY, Cobham Library Cedar Road KT11 2AE, Guildford Library North Street GU1 4AL, and The Wheelhouse in West Horsley every Friday. Please go to surreycc.gov.uk for further information.

REMEMBER THOSE FURTHER AFIELD WHO NEED HELP

UKRAINE
DONATIONS
URGENTLY
NEEDED

www.dec.org.uk



TRANSPORT SUPPORT

West Horsley Wheel of Care

The Wheel of Care has been going 22 years helping residents of West Horsley who need assistance by the provision of transport to appointments, house visits or other supportive activity. It also runs three clubs: seated exercise, scrabble, and film. Seated exercise is run by a qualified professional and is popular. The clubs provide a chance to socialize over a cup of tea and cake. We also welcome new volunteers.

For information, please call our Duty Officer on 07788 552767 between 10AM and 12 noon Monday to Friday or visit the website www.westhorsleywheelofcare.co.uk

Community Bus

The Horsleys Community Bus operates a minibus which is driven by volunteers and is used for the benefit of individuals and groups, generally the elderly, in the Horsleys and surrounding area who do not have transport. It is designed for easy access and operates a door-to-door service with three threads of operation:

- It operates weekly scheduled trips to local supermarkets to enable people to do their weekly shop.
- It supports various groups around the villages who need transport to their venues.



- It helps the local care homes where many of the residents are from Horsley by facilitating outings in the bus.

Additionally, the vehicle is driven by individuals who live in our community. There is an ongoing demand for our service and anyone who can spare a few hours to drive the bus every few weeks and to contribute to the community will be very welcome.

For further information please contact Kelvin Hayes on 01483 283314.

ST MARY'S CHURCH

Playing our part in alleviating difficulty

In the summer of 2022, when the government announced that everyone in the country would receive £400 to help towards our energy costs, I challenged the congregation at St Mary's to give some or all of that to help others in the parish and wider village.

In total we raised several thousand pounds and so now we are dispersing small gifts to a number of people both within St Mary's and the wider community.

If you are in need and facing a choice between heating and eating, please get in touch with me directly, in complete confidence.

Rev Phil Herrington Rector, West Horsley

Email: philherrington@stmaryswesthorsley.co.uk
Phone: 01483 283821

SOCIAL SUPPORT

West Horsley Evening Women's Institute (WHEWI)

The WI, WHEWI is a lively group that loves meeting people & enjoys learning. They are always delighted to welcome visitors and new members. Silver Sunday was a joint East and West Horsley event enjoyed by all. Please contact them via email to join in westhorsleywi@btinternet.com or telephone Sue 01483 281 669.



TASK GROUPS COVERING YOUR VILLAGE

CLIMATE TASK GROUP CAN BE FOUND ON PAGE 8 & 9 WITH PLANNING UPDATES ON PAGE 10 & 11.

COMMUNICATIONS TASK GROUP

The team are trialling a digital mini newsletter to be launched early next year. Don't forget to sign up to our mailing list to receive it! After the success of the small exhibition of old postcards of West Horsley which we bought at auction, we are hoping to launch in 2023 postcards and prints for purchase and proceeds would go to the Youth Council to support free events for the community.

Vanessa Buosi – cllrbuosi@westhorsley.info



ROAD SAFETY & MAINTENANCE TASK GROUP

We understand everyone's concerns about the heavy construction vehicles damaging our roads. However the more individuals report any issues on line, the faster the issues get resolved. So should you notice flooding, pothole or pavement damage please report it at

www.surreycc.gov.uk/do-it-online/report-it-online

In addition, if you have any concerns and have trouble reporting please contact our deputy clerk on deputyclerk@westhorsley.info

CLlr Peter Colbourne-baber –

CLlrcolborne-baber@westhorsley.info

FINANCE TASK GROUP

In April 2022 the Finance Task Group was transformed into a Committee, the meetings and agendas are published on the Parish Council website and on the village noticeboards, the public and press can attend. The meetings are normally quarterly with the next meeting is due to be held on Wednesday 11th January 2023. One item to be discussed at that meeting will be the second tranche of grants to be distributed for the year 2022/23. Organisations in West Horsley or with a West Horsley connection need to apply by 31st December 2022. The application forms can be found on the Parish Council website, www.westhorsley.info under the Parish Council tab. or by contacting the clerk by email, clerk@westhorsley.info. The main activity of the Finance Committee in the Autumn is the preparation of the budget for the following year which has to be approved by the full Council at the December meeting before submission to Guildford Borough Council by mid-January for inclusion in your Council Tax bill for the coming year.

Frances King – cllrfking@westhorsley.info

COMMUNITY TASK GROUP

One of the many events organised by this team was the annual West Horsley in Bloom. There was a palpable sense of excitement about this year's competition. In celebration of the Queen's platinum Jubilee we began with a glass of bubbly! The two new categories of Biodiversity

Champion and Best Jubilee themed planter or hanging basket attracted some attention while the junior Potato in a pot attracted its highest entry ever. The Mayor of Guildford and his wife, resplendent in their chains of office, added an air of special occasion to the whole event. The overall winner and the winner of the Roxburghe Cup was West Horsley Place. For a full report of the event category results of results, please see the Parish Council's website and page 6 of this newsletter for photos.

Mel Beynon – cllrbeynon@westhorsley.info

ASSET & APPEARANCE TASK GROUP

Despite the long hot Summer and the near drought, the Village is looking well in the Autumn sunshine. The makeover of the Village Green has been completed and now provides additional recreation space. Residents and walkers alike can enjoy sitting on the benches there, and at the newly installed one at the corner of East Lane and Ockham Road North. The Orchard restoration project is nearing completion, and once the roses grow around the entrance arch it should be something of which we can be genuinely proud at the heart of our Village. Elsewhere the tennis court is attracting an

increased number of users, and we are currently exploring the possibility of installing low level floodlights to provide extended evening use during the winter months.

Tony Rogers – cllrrogers@westhorsley.info

WEST HORSLEY YOUTH COUNCIL

Despite a heavy workload at school, our young councillors managed, with lots of enthusiastic support from the Parish Councillors, to present two events in the past year. The first of these was the tennis tournament which celebrated the refurbishment of our community Tennis Court. The second event was the free cinema event at West Horsley Place. Two of the Youth Councillors left to go on to university and the membership to the WHYC was acknowledged in an offer letter! We now have three new Councillors, Elise, Adrian and Clare who will continue to develop and represent the views of the youth in our community.



**West Horsley
Youth Council**

THE BIG VILLAGE LITTER PICK

Saturday October 22nd was sunny and lovely as any Spring Day. Residents responded very positively, and we had over thirty keen "pickers" turn up. Furnished with all the equipment for a successful pick, our army of residents spread across the village and came back with about 25 bags of rubbish! The weather gave us the chance to restore the usual pattern of events. Tea/coffee, chocolate, biscuits, and cakes were served in the newly refurbished Village Orchard. The new picnic tables were much appreciated as was the chat and laughter. Everyone seemed to enjoy themselves and it was a lovely celebration of a now much tidier village. It was a chance too for Councillors to meet in an informal atmosphere with our residents and they with us. A happy and relaxed end to a very worthwhile effort.

Thank you again and we hope to see you sometime in February 2023 for the "Spring Tidy Up".

Jane McKenzie – deputyclerk@westhorsley.info



HISTORY & HERITAGE OF OUR VILLAGE...

YOUR VILLAGE...

"Is over 3 miles from north to south, and only just over one mile from east to west and contains 2,672 acres. West Horsley from east and west it reaches from the top of the Chalk Downs, across the chalk, the Thanet and Woolwich Beds, and part of the London Clay".

THE GREAT OAK OF WEST HORSLEY

Is estimated to be over 400 years old and is the inspiration for the logo of the Parish Council and the Village Signs due to be erected in the near future. Look out for them. The Oak was also the central point for the laying of the memorial wreath for Her Majesty the Queen this September.



THE VILLAGE HALL HOLDS THE KEY!

A recent find of two Victorian Keys were donated by the owner of the property once The Parish Rooms, to the Parish Council. Thought to be the original keys, one to the main door and the other to The Old St Mary's School (behind the orchard). They will be displayed together with the book about the Village in the Village Hall, do take a peek the next time you are in!

Chairman Elaine Best with keys and book in village hall



A little bit of History about your village...

MEDIEVAL HORSLEY

West Horsley boasts several surviving medieval houses. Taxation Returns for 1332 for West Horsley list names Henry, Peter and Robert Pykenet and Thomas de Lolleworth. Pincott Farm and Lollesworth Farm are the 2 medieval buildings still standing today. The first half of the 14th century saw a chain of natural disasters for West Horsley, disease among cattle and sheep, long series of droughts, storms and cold and wet summers which created a series of bad harvests. So that finally by the time the Black Death arrived in 1348 the people in the Village had little resistance to the disease. It is estimated that the village population could have halved in line with the rest of the country. Following a period of unrest culminating in the hated Poll Tax, the Peasants Revolt by the end of the 1300's, West Horsley village changed from arable to a Wool Village with the weavers settling around "Tintalow Green" which was the tethering space where the woven cloth was stretched out to dry on the "tender hooks"

Extracts from June Davey

Today, West Horsley has forty-three buildings and part of one park on the register of listed properties at Historic England. This includes two Grade I buildings, the main house at West Horsley Place and the Church of St Mary the Virgin to give its official name. As to the Grade II buildings these range from houses to barns, a dovecote, a grave, garden walls, gates and even dog kennels. The dog kennels are in front of West Horsley Place. The Currie family leased West Horsley Place for most of the 19th century and built the dog kennels in around 1840 for their deerhounds named Dersy and Dermid. Emily Currie, a young girl at the time, recorded in her diary that the dogs did not get on and were kept on chains just short enough that they couldn't meet in the middle between the two kennels. Visitors had to scamper between the two giant dogs to get through to the front door. A pretty effective security system! See cover. Cllr Frances King – cllrking@westhorsley.info

CHURCH HISTORY

A Brief History of St Mary's Church, West Horsley
There is evidence that there were Christians in this parish from at least 850 A.D., possibly earlier, so it is equally possible that there would have been a little church built of split logs standing on the same site as our church. The foundations of the present church were laid in 1030 by a Saxon thane called Thored. There are still remains of some Saxon work in the east and west walls of the nave. After the Battle of Hastings, West Horsley was one of the villages burnt down by William the Conqueror, but he did not destroy any churches, so our church remained. The diocese in which West Horsley came was changed from

Winchester to Guildford in 1927. In the 1930s, electricity was put into the church to replace 20 oil lamps. In the 1970s, the wall paintings were discovered and restored.

Pam Bowley © 2008

See www.stmaryswesthorsley.co.uk for more information and for purchase of historic books by Pam Bowley. Rev'd Phil Herrington Rector, St Mary's West Horsley

A SHORT HISTORY OF THE WEST HORSLEY METHODIST CHURCH

West Horsley Methodist Chapel was built and opened for worship in April 1876. Previously open-air services were being held under the oak tree on the village green in West Horsley. Local people decided to raise money to buy land and build. In 1936, the Diamond Jubilee of the Chapel, a hall was built, known as the school Room. This was mainly used by the Sunday School children, but from the 1980s onwards used for outreach activities. The Chapel building has been very carefully maintained and modernised. In 2011 the old hall was demolished, and the new Wesley room is now the focus of many activities. Thus, for 146 years the tradition of Methodist worship has been upheld in West Horsley. If you are interested in reading a fuller account, copies of John Lawn's History are available. The church's Coffee Morning 10.30-12 noon on Thursdays is part of the village's Warm Room initiative.

Bob Spackman

97 The Street next to the Village Hall KT24 6DD
Tel: 01483 575432

www.westhorsleymethodistchurch.org.uk



CALLING ALL VILLAGE HISTORIANS

If you would like to share West Horsley Historical information in our next newsletter, please contact clerk@westhorsley.info and we will do our utmost to share your story.

CALENDAR OF EVENTS...

Since our last Newsletter in May the village has been busy – here are a few of the events...

JUNE

On the 2nd of June the lighting of The Beacon at West Horsley Place was a huge success over 800 people joined in! Our Scottish bagpiper, Jock McCulloch, flew in specially for our event.

THE HORSLEY JUBILEE PICNIC PARTY & PARADE
East and West Horsley Parish Councils joined forces for the Platinum Jubilee celebrations. The Parade left West Horsley place to Horsley Towers on Sunday 5th June.



JULY

West Horsley Bloom
July 1st, 2022 Winners,
BEST back Garden,
Helen David; BEST
Jubilee Container, Philip
& Pip Holms, JUDGES
PRIZE - Trevor Wykes
and Finally The
Roxburghe Cup was won
by West Horsley Place!



WEST HORSLEY COMMUNITY TENNIS COURT

On the 24th of July to mark the official re-opening of the newly refurbished Tennis Courts, The Parish Council and the West Horsley Youth Council held the finals of the WHYC Tennis Tournament. Well done Alex from the Youth Council for arranging all the heats and the final. The Prizes were presented by Arvind Parma & Kate Rayment including a signed racket by Tim Henman.



SEPTEMBER

On the 8th September the Parish Council website went dark in respect of the Her Majesty The Queen's passing. The Parish Council opened a condolence book at the village hall.



AUGUST

The Chairmans Garden Party
19th August The WHPC Chairman personally thanked all volunteers for their support over the years.



THE SUNFLOWER FIELD

The Flowerpower team in conjunction with the Parish Council who funded the seeds for the planting of the Field, were delighted at its success! August 2022 turned out to be a sunflower month with local artists & residents enjoying them alike.



THE WEST HORSLEY PROCLAMATION

The Chairman of West Horsley Parish Council, outside the village hall on September 11th announced the official proclamation of King Charles III. In addition, a wreath was laid under the great oak in the village thanking Her Majesty the Queen for her service. The sunflowers from the West Horsley Place fields adorned the tables inside where tea was served to those that needed support at this sad time after such a celebratory Jubilee Summer.





OCTOBER

THE WEST HORSLEY YOUTH COUNCIL (WHYC) CINEMA EVENT

After having to cancel, the Youth Council relaunched on October 21st their first free Cinema Event- showing Grease. It was not only enjoyed by locals but also refugees from around the world. It was a true coming together of the local young people of West Horsley. Big thanks to the Chairman of the Youth Council Bea and her Clerk Tim for manning the entry securely and collecting consent forms. Great job!



THE QUEEN'S GREEN CANOPY PHOTO

A tree planting initiative created to mark Her Majesty's Platinum Jubilee in 2022 has resulted in West Horsley planting a field maple in the Orchard on the 25th of October by our Chairman Elaine Best & Other Parish Councillors. The Queen's Green Canopy www.queensgreencanopy.org



THE BIG VILLAGE LITTER PICK

On Saturday October 22nd was a successful pick! Thank you again and we hope to see you all sometime in February for the "Spring Tidy up".

NOVEMBER

REMEMBRANCE

SUNDAY 13TH NOVEMBER

The village "poppies" at the chicane an obvious reminder so we don't forget. A village wreath was laid by our Chairman at St Mary's Church.



Your Fund Surrey site visit October



THE COMMUNITY FORUM (Education for our children) headed up by Cllr Paul Dodgson November the 29th at the Village Hall. (See page 10)

CLIMATE CHANGE TASK GROUP 3rd Event on 22nd November (see page 8), as well as the Farmers Market in November too.



DECEMBER

The Lantern Parade has moved to West Horsley place on the 4th of December at 3.45pm, a new Free tickets booking system was set up on www.westhorsley.info parish website.



And we do believe that concludes the Parish Council Events for the Year!...

CLIMATE CHANGE SPECIAL – OUR ENVIRONMENT



CLIMATE CHANGE TASK GROUP

West & East Horsley Parish Councils continue to work closely together to engage with our local community, raising awareness of the issues of climate change and ecological harm. Our intention is to share solutions and ideas that can help us build a strong sustainable and resilient community. We will then be better placed to face the challenges of our rapidly changing planet.

Please visit our website for our initiatives which are supported by a growing number of resident volunteers https://www.westhorsley.info/Climate_Change_41028.aspx. Or follow



Gardens flooded in West Horsley

our volunteer resident's group on Facebook and Instagram under the name 'The Horsley's Climate Action Network' <https://www.facebook.com/groups/1461305921061387/>.

This year launched a series of free information evening events on climate change:

- **July:** Was an introduction to Climate Change and how to calculate your carbon footprint with a talk given by Alex Veys, see our special feature opposite on page 9.
- **September:** We discussed how to save money whilst saving the planet. Claire Brown from Plant Passion shared her experiences and give tips on the little things we can do to make a big difference.
- **November:** Will have taken place on the 22nd. We invited two architects, Tom Housden and Robin Sjöholm, RIBA competition finalists, to give us an insight into the future of architecture for 'one planet living'. We are hoping to pick up some tips on how we can adapt homes to become more climate friendly (whilst saving some money!).
- **January 2023:** Will be 'all about stuff' and the 4 R's reduce, reuse, recycle, and repair.

Should you wish to get involved, please contact Catherine Young – cllyoung@westhorsley.info.

ENVIRONMENTAL SUSTAINABILITY WITHIN THE VILLAGE BOUNDARIES: WEST HORSLEY PLACE

Working to address biodiversity loss and climate change is also part of West Horsley Place's commitment to the future.

"We recognise the intertwined biodiversity and climate crises, and we have set appropriately ambitious environmental targets. Our work towards sustainability and addressing global environmental emergencies is divided into two areas of action.

Adaptive land management: Planning is a continuous and repeating decision-making process for effective land management. One example of this process in action is our ongoing work to support biodiversity.

Our environmental management: is a strategy mainly that concerns our operations and the impact of our organisation on climate change. It is our means of measuring and controlling the carbon emissions of every aspect of our day-

to-day work, from weddings and public events to office use and building management. Our roadmap is to reach net zero by 2030, when the amount of greenhouse gases that we produce will be no more than the amount that is taken away and stored (e.g., by our woodlands).

Our strategy has already achieved 'Blue' certification by the Steps to Environmental Management Scheme, an independent benchmarking service offered by local councils. All our work supports our long-term environmental and economic sustainability, which is central to the Trust's vision." Read more about this work at West Horsley Place by following this link: <https://www.westhorsleyplace.org/news/supporting-environmental-sustainability-at-west-horsley-place>.

By Yendle Barwise, Environmental & Sustainability Manager, West Horsley Place



Rare Cloud Rainbow by Matt @ WHP 2022

ORCHARD RESTORATION UPDATE

The restoration of the Village Orchard is nearing completion. Heritage fruit trees were purchased, as well as fruit bushes together with scented herbs such as lavender. Finally, a metal archway has been placed at the entrance, to be adorned with climbing roses to be planted by Rob @ Timberwood.

Cllr Frances King – cllrfking@westhorsley.info



TREES COMING TO NIGHTINGALE CRESCENT THIS AUTUMN...

Nightingale Crescent is home to a wide variety of beautiful trees – our very own version of Kew Gardens. As part of the Queen's Green Canopy initiative and at the request of local residents, we were keen to add trees to this area. Funded from the bequest left to the Parish Council for such a purpose by the late Mr Akerman, who lived near the Crescent.

With help from Guildford Borough Council, who own the land, seven trees have been purchased, one to represent each decade of our late Queen's reign. We hope that all the residents of Nightingale Crescent will watch over the new trees and enjoy them for years to come.

In addition, West Horsley Parish Council took part in the Forestry Commission Treescapes initiative, applying for free trees; 100 whips and 30 feathers. Whips are the single stems between 30cm and 60cm long, feathers are a bit bigger. Three of the feathers went to the Cricket Club for planting at Twinns Field most of the rest being planted in the Orchard to fill out the hedge where the ash trees had to be felled due to dieback and extending the hedge on the northern boundary with Old St. Mary's.

GLOBAL WARNING AND CARBON FOOTPRINTS

As far as conurbations, the Horsleys' are relatively small in the context of the world. They are nevertheless deeply impacted by climate change having recently suffered from the extreme heat of 38C. This continues with parched earth, lack of rain and even wildfires. In winter we are likely to suffer from deluges of rain, as we have recently been experiencing.

So, let's start with a little bit of science. The more CO₂ or other Green House Gases (GHG) in the atmosphere, the more heat is trapped, and the hotter Earth becomes. There is no question that man made emissions are contributing to global warming.

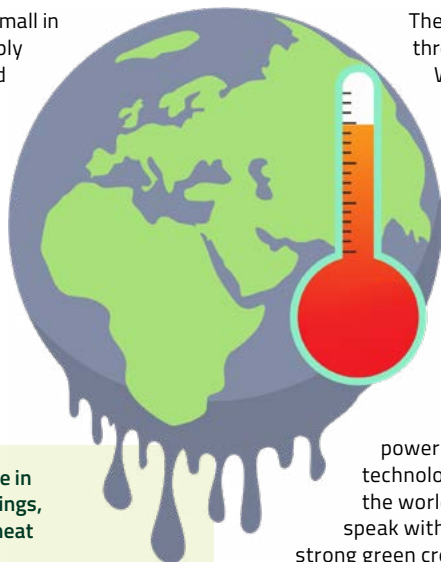
So, what can we as residents in West Horsley' do?

We can make changes by reducing our energy usage in heating, the purchase of new goods, and new buildings, as well as reducing our consumption of meat and meat derived products.

Simple things that save money and reduce emissions are using LED lights, improving insulation, and travelling less.

We also must be aware that buying even more efficient goods comes with an embedded carbon footprint and on balance may not make sense.

Understand your Carbon Footprint.



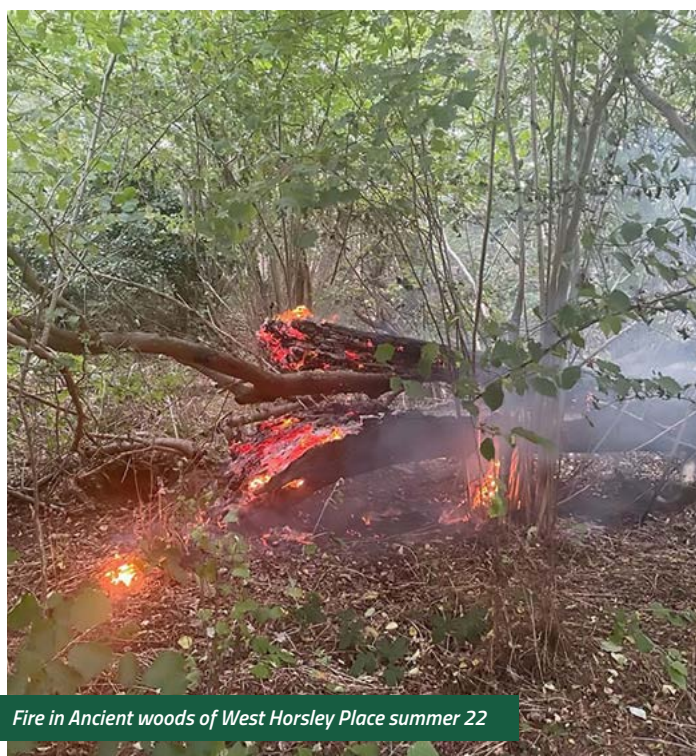
The internet has many footprint calculators with only three reviewed here. First is the calculator from the WWF (<https://footprint.wwf.org.uk/#/>). It is not 100% accurate, makes many assumptions, but it certainly gets the process started. Second is from Carbon Footprint Ltd (<https://www.carbonfootprint.com/calculator.aspx>). It is more complex, takes more time, and requires more detailed information. However, it is more accurate. The calculator from the Global Footprint Network (<https://www.footprintcalculator.org/home/en>).

This is different from the other two as it measures your ecological footprint. It seems to be orientated towards the US, but is still applicable to Horsley residents.

There are other actions we can take and those in power need to change the way the world works to favour technology, processes and behaviours that are friendly to the world. It is therefore imperative that everyone that we speak with, vote for or lobby who can instigate change, have strong green credentials which are proven by actions rather than words. I do not want to overstate the challenge the Earth faces, but it is a challenge that threatens the future of the current structure of human civilisation.

So, keep your eye on what matters and have a rethink. Take note of the hidden 70% (70% of emissions are embedded in the stuff we buy), reduce your energy use, plan and reduced your number of journeys or car share, reuse, or pass stuff on to someone who can use it, repair, and mend stuff, and finally if none of that works, recycle."

By Alex Veys MA, MEng, MSc in Sustainable Energy Futures, Imperial College London



Fire in Ancient woods of West Horsley Place summer 22



East Horsley, Kingston Meadows on fire Summer 22

PLANNING MATTERS

GUY MURRAY – CLLRMURRAY@WESTHORSLEY.INFO

Following WEST HORSLEY being removed from the Green Belt, the Parish Council has done its utmost to protect our green fields, our environment, our heritage assets, as well as try to preserve our landscape setting of the village and our local character. We, along with a vast amount of support from residents, have put a staggering amount of effort into protecting our village. Four key sites were identified and so far, three of these allocated site applications have been approved by Guildford Borough Council (GBC). Over the next 3 years, over 400 new homes will be developed within the immediate area of East and West Horsley.

Residents are concerned, about how the existing infrastructure will cope when there are very few plans to mitigate the increases. The Community Forum has been set up to help obtain answers. Please remember to sign up to our mailing list to receive information on any local planning matters as they arise. In the meantime, please also ensure that if you are planning any extensions or alterations to your own home that you refer to the West Horsley Neighbourhood Plan – available via www.westhorsley.info.

Guy Murray – cllrmurray@westhorsley.info

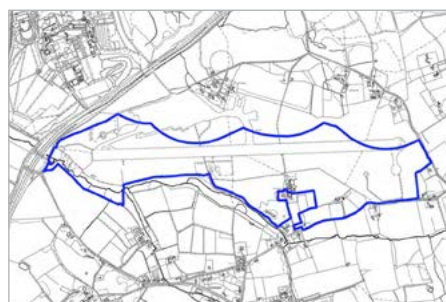
EASY ACCESS TO GBC FOR PLANNING OBJECTIONS

Register with My Guildford for easy access to Guildford Borough Council. The quickest and easiest way to access GBC services is by registering for an account at MyGuildford (<https://my.guildford.gov.uk/customers/s/>) or visiting the self service pages (<https://www.guildford.gov.uk/selfservice>). You can report an issue, make requests, and track progress on planning, pay your bills, and apply for key services at any time (<https://my.guildford.gov.uk/customers/s/>).

Site A35 – Former Wisley airfield, Ockham Ref: 22/P/01175

The planning application to build 2100 houses and associated commercial and social buildings has now been submitted by developers Taylor Wimpey, and over 1,200 objections have been logged with GBC. Acting jointly with East Horsley Parish Council, and in consultation with a number of local experts and national consultants, we submitted our objection, of nearly 100 pages and covering 15 topics, on which we have strong grounds for objection. No decision from GBC is expected until the Summer of 2023 at the earliest.

Tony Rogers – cllrrogers@westhorsley.info



Site A36 – Land at and to the rear of Bell and Colvill, Epsom Road

Construction work is nearing completion and most homes are currently occupied. We understand at this time the Showroom will remain as is.



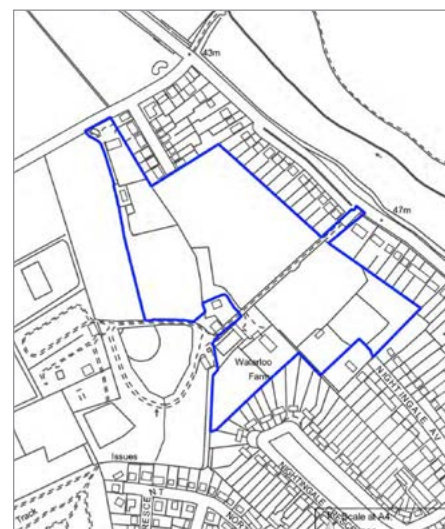
Site A37 – Land to the west of West Horsley, Manor Farm Reference: 20/P/02067

This site was identified for approximately 139 new homes. The Parish Council hold regular meetings with Thakeham Homes to address any issues or concerns that we or residents have and will continue to collaborate closely with them to ensure a smooth delivery and completion of the project. Minutes of our meetings can be found on our Parish Council website.



Site A39 – Land to the north of West Horsley, NR Waterloo Farm Reference: 21/P/00917

This site was identified for approximately 120 new homes. We will be posting updates on the Parish Council website and liaising with the residents within the immediate vicinity of the site with any important information. After commissioning a hydrologist who is assessing the site for water related issues, in particular flooding, we are working closely with a planning consultant to ensure the application meets the Neighbourhood plan, the GBC local plan and the National Planning Policy Framework (NPPF). Including the Parish Council, there are approximately 140 objections to this second application at the time of writing. Should the application be approved the Parish Council will seek to also work alongside the developers to ensure a smooth delivery.



COMMUNITY FORUM GROUP SET UP – EDUCATION

In the last two years the landscape of our village has changed considerably. Diggers, cranes, lorries going to and from to the building sites that are springing up with more to come. Some 385+ new houses are to be added to our housing stock by the end of 2023 representing a 35% increase. It is estimated that our village population will increase from 2300 to 3000+ as a result of these major developments. If you have young children in your family, you have probably wondered how the state schools are going to cope with the increase in population. Well, you're not the only ones! The Parish Council has been trying to find out the answers but still isn't sure what lies ahead. So, what do you do in a situation like that? Well you ask the experts. As this goes to press that's exactly what we hope is going to happen on November the 29th at the Village Hall. We have invited representatives from Surrey County Council, Guildford Borough Council, South Farnham Education Trust (who administer the Raleigh) and headteachers from our local state schools

to give us the benefit of their knowledge. We are not looking for an argument, it is a genuine effort by your Parish Council to provide information, and hopefully some answers, to those questions which we know so many of you are asking. We will update you on the results of the meeting via our digital mail outs. Please sign up to our mailing list to receive an update. QR can be found on the back page of this newsletter.

Cllr Paul Dodgson –

cllrddodgson@westhorsley.info



Site A38 – Land near Horsley railway station, Ockham Road North, Reference: 21/P/02394

110 new houses and 99sqm of office space was approved by GBC in December 2019. A reserved planning application was recently approved in September 2022 for the approval of appearance, landscaping, layout, and scale for the residential development, despite many objections to both these applications from a number of residents and both East and West Horsley Parish Councils.



KEEP THE HORSLEY MEADOWS (SANG) CLEAN!

Several residents have mentioned that our lovely Horsley Meadows is being sadly abused by dog walkers who do not respect the area and are leaving behind dog waste. Let's politely make sure that visitors know that we all wish to enjoy the area, The WHPC will put up a countryside code poster and printouts of the Countryside code can be accessed via the QR code for sharing too.



AREA OF OUTSTANDING BEAUTY (AONB)

Our submission and proposal were submitted earlier this year and we were hoping that a determination would have been issued this calendar year. However, due to the volume of submissions received by Natural England we are not expecting to hear about the next stage of our application until Spring 2023.

Tony Rogers – cllrrogers@westhorsley.info

HEALTH AND FITNESS IN THE VILLAGE...

DANCE!

Dancing is great exercise for both body and mind. It helps keep you physically fit and improves your memory! Music lifts your spirits, as does spending time having fun with friends. Every Wednesday evening you could have all these health benefits, and if you come as a couple, it's a hobby you can enjoy together too. A few times round the dancefloor and you'll be hooked! We are Andy and Sue, we've lived in West Horsley for 19 years, and have been dancing together since 1995. We teach adult social ballroom and Latin dancing from complete beginners to improver level. Ever wanted to dance at a party but didn't know how? Let us give you the confidence and some steps to get you moving and having fun. Weekly classes are on Wednesday evenings at



West Horsley Village Hall from 7.30pm. Private lessons are available too, and we also run evening social dances and afternoon tea dances. Please email us at courtdancingwh@outlook.com to find out more or call Sue on 07961 917721.

PILATES

Jessica Pilates have run Pilates classes at the WHVH for many years and believe we offer small capacity, friendly but professionally run classes on a Thursday morning. Two Classes run 09:15am and 10:20am every Thursday (Term-Time). Being part of the Jessica Pilates brand means clients also have the flexibility of attending catch up classes in Effingham or Cobham if they cannot make a Thursday morning. All ability groups are catered for, and we encourage everyone to attend their first Free Taster session to see what it is about.

Our contact details are: admin@jessicapilates.co.uk or mobile 07517 832918 (Nikki)

THE WEST HORSLEY SPORTS HUB UPDATE – YOUR FUND SURREY

The Your Fund Surrey County Council has determined that our combined plans for increasing the Sports Facilities in West Horsley, has met the criteria for consideration for funding.

See a draft drawing concept. In the meantime, a survey is currently being designed and will be sent to all within West Horsley and surrounding border Parishes. We look forward to receiving comments and suggestions of what to include

within the Multi Sports Facility. This is one of the criteria needed by YFS before awarding the concept! We would love to hear from you and look forward to your continued support.

For further information please email cllrbusi@westhorsley.info or for further details of the concept **FOR YOUR FUND SURREY SPORTS HUB** (<https://yourfundsurreymap.commonplace.is/comments/61b77461d253102cff451936>).





West Horsley Parish Council



HORSLEY CLUBS & ACTIVITIES

ARTS

Horsley & Clandon Society of Arts
Robyn Cormack Tel: 01483 224063

Horsley Craft Group
Jody Fern Tel: 01483 284437

The Arts Society Horsley
www.theartsocietyhorsley.org.uk

The Arts Society Horsley Lovelace
www.theartsocietyhorsleylovelace.org.uk

CLUBS

University of the Third Age (U3A)
www.horsleyu3a.org.uk

East Horsley Women's Institute
Helen Taylorson Tel: 01483 283577

West Horsley Women's Institute
Pip Holmes Tel: 01483 285496

West Surrey Natural History Society
Tel: 01372 457623

The Probud Club of the Horsleys
David Lush Tel: 01483 280267

Rotary Club of Bookham & Horsley
Mark Secker Tel: 01372 458733

Horsley Countryside Preservation
www.hcps.online

East Horsley Bridge Club
www.bridgewebs.com/easthorsley

Horsley Floral Decoration Group
Ruth Farmer Tel: 01483 202440

Horsley Garden Society
Roger Lindsay Tel: 01483 282408

Beehive Craft Group
www.easthorsleychurch.org.uk

Wheel of Care Social & Exercise Clubs
www.westhorsleywheelofcare.co.uk

DRAMATICS & CHORAL

The Nomad Theatre
www.nomadtheatre.com

The Whips Players
www.whipstheatre.org

Horsley Choral Society
www.horsleychoralsociety.com

YOUTH

Beavers, Cubs, Scouts & Explorer Scouts
www.firsthorsley.co.uk

4th Horsley Brownies
Email: horsleybrownies@yahoo.co.uk

1st West Horsley Brownies
Email: westhorsleybrownies@gmail.com

1st Horsley Guides
Karlene Peach Tel: 01483 224692

SPORTS & ACTIVITIES

Sports facilities & Skatepark
Kingston Meadow, Kingston Avenue

The Horsley Shufflers – running group
www.facebook.com/HorsleyShufflers

Horsley Football Club, West Horsley
www.horsleyfc.co.uk

Effingham and Leatherhead RFC
<https://eaglesrugby.club>

West Horsley Community Club Snooker & Pool
Robert Elliott Tel: 07702 922217

Effingham Table Tennis Club
Tim Hobbs Tel: 01372 452197

Horsley Tennis Club
www.horsleysportsclub.com

Horsley Badminton Club
www.horsleybadminton.co.uk

Horsley Cricket Club
www.horsleysportsclub.com

Effingham Cricket Club
www.effinghamccc.co.uk

Horsley and Send Cricket Club
www.horsleyandsendcc.co.uk

SEASONAL PUZZLE



Can you spot the 7 differences?
How many Baubles are featured throughout the newsletter?
Visit our website for the answers

MEET THE TEAM

Join us at our Monthly meetings (third Tuesday of the Month) and have your say about your village! If you can't make it sign up to our mailing list to be up to date on current projects, events and issues affecting West Horsley.

PARISH COUNCIL CONTACTS



ELAINE BEST
Chairman
chairman@westhorsley.info



FRANCES KING
cllrking@westhorsley.info



MEL BEYNON
cllrbeynon@westhorsley.info



VANESSA BUOSI
cllrbusi@westhorsley.info



CATHERINE YOUNG
cllryoung@westhorsley.info



PAUL DODGSON
cllrddodgson@westhorsley.info



GUY MURRAY
cllrmurray@westhorsley.info



PETER COLBORNE-BABER
cllrcolborne-baber@westhorsley.info



TONY ROGERS
cllrrogers@westhorsley.info



JANE MCKENZIE
Deputy Parish Clerk
deputyclerk@westhorsley.info



JULIA MCCLUNG
Parish Clerk
clerk@westhorsley.info

USEFUL TELEPHONE NUMBERS & WEBSITES

Neighbourhood Policing team
Tel: 101
guildford@surrey.police.uk

GBC Refuse Collection
Tel: 01483 505050
www.guildford.gov.uk

Slyfield Recycling Centre
Tel: 01483 532187

Guildford Borough Council
<https://my.guildford.gov.uk/customers/s/>

Water Leaks
Tel: 0345 357 2407
www.affinitywater.co.uk

Gas Leaks
Tel: 0800 11 19 99

Electricity Power Cuts
Tel: 0800 31 63 105 or 105 (Mobile)
www.ukpowernetworks.co.uk

Flooding & Waterways
www.gov.uk

Environment incident hotline
Tel: 0800 80 70 60
www.gov.uk

Surrey County Council
www.surreycc.gov.uk/do-it-online/

SCC Highways Roads & Transport
www.surreycc.gov.uk/roads-and-transport

Floodline:
Tel: 0345 988 1188